

*The Ngāruawahia High School
Maori Cultural Group*

PRESENTS

A PREMIERE



OF THEIR

Xth Jubilee Festival Programme

FOR THE INTERNATIONAL FESTIVAL
OF YOUTH ORCHESTRAS AND THE
PERFORMING ARTS FOUNDATION
IN ABERDEEN, EDINBURGH,
LONDON, AUGUST, 1978

THE INTERNATIONAL FESTIVAL OF YOUTH ORCHESTRAS AND THE PERFORMING ARTS

The 1978 Tenth Anniversary Festival will be attended by young participants from the United Kingdom, the United States of America, Brazil, Japan, South Africa, Venezuela, West Germany, East Germany, the Philippines and other countries. The organisation hopes that all will benefit greatly by meeting and forming lasting friendships with their fellow youth from all over the world. Only with understanding and respect can there be the international co-operation so essential for man to live with dignity in peace and harmony.

From the National Youth Orchestras and Choirs that attend, several International Orchestras and a Choir will be formed. Maestro Carlo Maria Giulini will be attending the Festival in Aberdeen as the main Guest Conductor and will conduct one of the International Orchestras. This particular orchestra will perform Beethoven's Ninth Symphony (Choral) and will give a Gala concert in Aberdeen on 18th August and also OPEN THE EDINBURGH INTERNATIONAL FESTIVAL on Sunday 20th August.

Guest soloists include Mr Isaac Stern playing the Mozart Violin Concerto in G Major K216 at the Edinburgh performance of the Giulini Orchestra. Mr Roger Woodward will be performing the Brahms 2nd Piano Concerto which will be part of another Gala evening.

Guest conductors include Mr Oskar Danon from Yugoslavia, the Marchioness of Aberdeen, June Gordon, and the Festival Orchestra Director, James Judd.

As well as presenting the programme you see tonight, our group will be contributing to International Dance Gala performances yet to be finalised.



To The Te Ranga Carving School
and the Turangawaewae Marae Carving School
including

Wikuki Kingi
Inia Te Wiata
Des Kahotea
Bill Te Wiata

Rewi Graham
Leo Muru
Tom Raumati
James Joseph

OUR SINCERE THANKS

THE INTERNATIONAL FESTIVAL OF YOUTH ORCHESTRAS AND
PERFORMING ARTS

President:

THE RT. HON. EDWARD HEATH,
M.B.E., M.P.



Secretary General:

MRS JOY BRYER
24 CADOGAN SQUARE,
LONDON, SW1X 0JP
01-235 6641
01-589 0344

Chairman

Lionel W. Bryer

Festival Director of Music

Blyth Major

Secretary General

Hoy Bryer

Hon. Musical

Advisory Committee

Alexander Gibson CBE
Walter Susskind
Leonard Bernstein
Prof. Max Rostal
Sir Geraint Evans
Prof. Leon Goossens CBE
Prof. Aleksander Pavlovic
Bernard Montagu

Festival Director of Ballet

David Blair CBE

Hon. Treasurer

John W.R.C. Nicholas

Committee

The Rt Hon. Jeremy Thorpe MP
The Rt Hon. the
Baroness Lee of Asheridge
Pierre Salinger
Dr Thor Heyerdahl
Hugh Jenkins MP
Myrlam Major
Marquess of Lothian
Jonathan Sieff
Frank Kelly
Harold H. Sebag-Montefiore
James Langley
Jack Payne JP
Ralph C. Dudrow

Advisory Committee

in Great Britain

Sir Alexander Glen KBE DSC
Robin MacLellan CBE JP
Lord Provost of Aberdeen
The Rt Hon. William Ross MP
Lord Mayor of Westminster
Sir Mark Henig
Norman St John Stevas MP
Dr E.M. Wright

Advisory Committee

in Aberdeen

The Marchioness of Aberdeen
MBE DL LLD FRGM
Charles F. Graham
Phyllis Wright JP
Pauline Mackie
Irene Crombie JP
Dorothy Hateley
Margo Longley
William W. Dickie
James R. Leith JP
Lt Col. John Davie MC MBE
James Donald
James A.D. Michie
John L. Wilson
Thomas H. Johnston
Ian A. Anderson
Donald Hawksworth
Michael Archibald
Dr Myra Soutar
Rae C. Barton
Norman Esslemont
J. Locke Nicholson

The Ngaruawahia High School

Maori Cultural Group

TOUR PLANNING COMMITTEE:

Principal & Chairman
Board of Governors
Parent Teachers' Assn

— Neville Murphy M.A.
— Peter Hodgkinson
— Allan Fox
June Haultain

Group Parents' Committee

— William Te Wiata
Doreen Gregory

Cultural Tutors

— Hakopa Puke
Te Te Turner

Fundraising & Publicity

— Robert Pollock
David Braithwaite
Jim McLeod

School Representatives

— John Moir B.Sc.
Lesley McNamara M.A. (Hons)
A.T.C.L.

Group Parents'
Committee Exec.

Warwick Braithwaite T.T.C.
Ngahuia Dixon, T. Maori, Lang. T.
— Treasurer, Wynel Te Wiata
Secretary, Margaret Muru
Transport, Pokaia Nepia

Under the auspices of The International Festival of Youth Orchestras Foundation [of Great Britain] recognised in the United Kingdom and the United States of America as a charity



The Cultural Group

The School's group was formed in 1975 as a natural development from courses in Maori Studies which were instituted at that time, and provides students with an opportunity to develop their talents as a performing group. Prior to this development there had always been all forms of cultural activity at the Turangawaewae Marae and the school has been very grateful for the advice, assistance, and guidance available from the elders and traditionally nominated tutors.



PUKE POUTAPU

- ✓ Maihi Dixon
- ✓ Tia Tia Edwards
- Waka Graham
- Peter Henry
- ✓ Hoki Katipa
- Ben Matthews
- ✓ Duke Moeke
- Dawson Parata
- ✓ Paru Poutapu
- ~~Bruce Pompey~~
- Jerry Pira
- ✓ Arthur Rhind
- Te Kani Te Wiata
- Manaia Te Wiata
- ✓ Morgan Tini

~~Reserve~~ ✓ Jacky Mahara

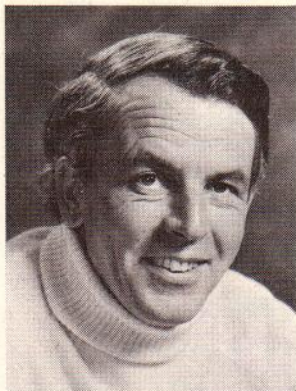
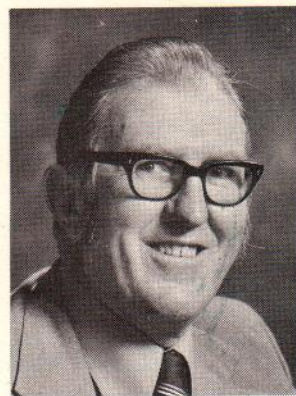
MANAWA TINI

- Ngaru Gregory ✓
- Brenda Henry
- Ranginoho Morgan ✓
- Cheryl Muru
- Sophia Muru
- Rilitia Nepia
- Adrienne Parata
- Aina Ranga ✓
- June Roberts
- Maree Tahu
- Marion Tahu
- Kim Te Wiata
- Rachael Tonga
- Raima Turner ✓
- Christine Winikerei

~~Reserve~~ Louise Rhind



NEVILLE MURPHY: Principal of Ngaruawahia High School, and Tour Director and a Master of Arts graduate of Waikato University, has succeeded in welding a co-operative working relationship between the school, the Turangawaewae Marae and the Maori people, and the urban and rural community. Born in Taupiri, (the place of the sacred mountain), his sympathetic understanding has made this tour possible. He has taught at Garth Secondary School for two and a half years.



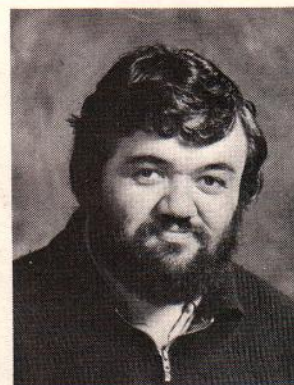
WARWICK BRAITHWAITE: Production Director was born in 1933. He is a nephew of the well known late New Zealand born conductor of the same name. He is widely known in New Zealand for his work, particularly with secondary schools' orchestras, is currently Musical Director for a large orchestral instrument tuition scheme in Hamilton and has musically directed New Zealand premieres of "My Fair Lady" and "No No Nanette", and also directed "The Merry Widow", "Fiddler on the Roof", and other productions from the Hamilton Operatic Society. His association with Maori schools (as they were then known) in his early teaching career has contributed to the development of this programme.

ERANA COULTER: Producer and Maori Cultural Adviser pioneered the school's Maori cultural development and now teaches at a Hamilton school. She brings to the group a wide background of Maori cultural experience. She is a descendant of the Ngati Porou tribe of the East Coast of New Zealand with Irish ancestry on her mother's side and Scottish ancestry on her father's side. Her early childhood was spent in a total Maori environment where Maori language, customs, arts and craft were the only means of communication. She is deeply involved in Maori education at all levels including University and is heavily committed with Youth Organisations, both Maori and Pakeha.



NGAHUIA DIXON: Associate Producer and Wardrobe is a graduate of Hamilton Teachers' College and directs the school's Maori Arts and Language curriculum. A descendant of the Ngaiterangi and Ngatiranginui tribes of Tauranga, both her parents have Scottish ancestry. She is an active member of the Turangawaewae Marae Committee.

INIA TE WIATA: Design Director and Stage Manager has co-ordinated all design aspects of the group, developing motifs, linking the school with Turangawaewae Marae, designing costumes and sets, and making every effort to make certain that our audiences see the traditional elements of Maori art. He is a master carver and son of his namesake, the noted late New Zealand bass.



A Maori Marae is a communal outdoor assembly place
reproduces the actual ceremony appropriate on

After the interval the programme consists of a selection
the latter having been ad

MARAE RECEPTION

PUTATARA	Call by the Sentinel
WERO	Challenge by the Host
KARANGA	Call by woman host
KARANGA	Reply by women hosts as they approach the courtyard
TUWAEWAE	Taiaha war dance by hosts during challenge
TOIA MAI	By women hosts
RANGIMARIE	Acceptance of peace offering challenge by visitors
TANGI	Mourning ceremony
TAUPARAPARA	Prologue to a speech
WHAIKORERO (Mihi)	Welcome speech by host
WAIATA	Chant (relish of speech) by host
TAUPARAPARA	Prologue to a speech
WHAKAHAKI	Reply by visitors
WAIATA	Chant in support of speech by visitors
WHAKATAKOTO KOHA	Presentation of gift by visitors
KARANGA WHAKAUTU	Thanksgiving chant by woman host during presentation
TE WHAKARARAU	Picking up (accepting of) gift by host
HONGI	Formal manner of greeting
WHAKANOA	Rite of purification

in front of the tribal meeting house. This performance
the occasion of a welcome to illustrious guests.

of popular items of both Maori and European origin,
pted to the Maori idiom.

MEETING HOUSE RECEPTION

TE ATAWHAI HIMENE	Hymn
TAMARIKI MAORI	Short Ditty
E NOHO E ATA	Action Song
KA WHANATU (Ngeri)	Posture dance led by women
KIO HAKA	Posture dance by men
TE-AEA (Wairangi)	Posture dance by men
TOIA MAI TE WAKA	Chants of welcome
KA MATE KA MATE	
POI (Double Short)	String ball
E-TE-IWI-E	Instructional song action song
HE TIA	Hake with Taiaha
PAREKURA	Taiaha performance by men
HAERE RA E HINE	Boys' instruction song
KIA HIKO	Girls' demonstration of the mere (short club)
	Boys with Taiaha (weapon)
KARANGA MAI	Song of gratitude
HE PIKO	Poi chant
POI WAKA	Canoe poi
TITITOREA	(Single) Stick game
RONA	Action song
HINE-E-HINE	Love song (Group song)
PANAPANA	Girls' posture dance
HAKA	Posture dance by men
MANINI WAKA	March off

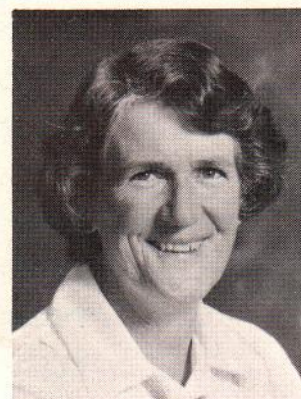
HAKOPA TE HUIA PUKE — Haka Party Tutor and Properties

The traditional method of ensuring the survival of the culture is epitomised in the work of Hakopa, who has trained the boys of the group. Before his grandfather, Wiremu Poutapu's death, Hakopa was chosen to carry on this traditional education. The acclaim that this haka party has received on many occasions shows clear evidence of his skill in this aspect of Maori cultural training.



DOREEN GREGORY — Chaperone is Secretary of the Turangaewaewae Marae Committee and the Secretary to the Chief Executive of the Waikato Hospital Board. She is a former member of the Board of Governors of Ngaruawahia High School and the School Committee of Bernard Fergusson Primary School.

DR ELSPETH KJESTRUP M.D. Ch.B. — Medical Adviser is a graduate of Edinburgh University. She practised for many years in Ngaruawahia and has known many of the students in the group since birth. She is currently Medical Officer for student services at the University of Waikato, a supporter of the Waikato Symphony Orchestra and actively involved in Family Planning Association work.



WILLIAM TE WIATA — Supporters' Group Manager. As well as Chairman of the Group Parents' Committee he is managing a supporting group of twenty five people of varied cultures and interests, who have taken advantage of arrangements made by ATA Travel and the I.F.Y.O. Foundation. Included in this group are farmers, orchestral musicians and, of course, friends and relations of those in the performing group — a great multi-cultural achievement.

The Invitation

The Invitation to take part in the British Festival came about as a result of the eminent British Conductor Nicholas Braithwaite's visit to the school in March 1977 after his tour with the New Zealand Symphony Orchestra. He had heard much about New Zealand and its Maori culture from his Dunedin born father, and expressed a strong desire for this group to visit Britain. The results of his overtures come to fruition when the group flies from Auckland on Sunday July 30th.

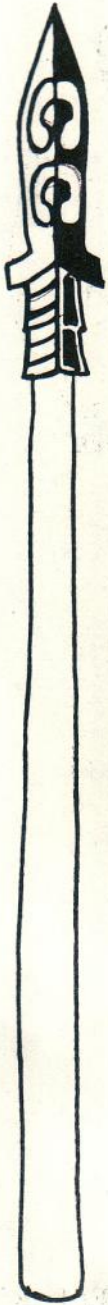
The Story of the Group

THE NGARUAWAHIA HIGH SCHOOL Turangawaewae Marae Maori Cultural Group is led by Puke Poutapu a seventeen year old student who follows in the footsteps of his grandfather, Wiremu Te Ranga Poutapu, who was himself a master carver and cultural leader.

Manawa Tini leads the girls and is a fifth form student of the school. Her gracious charm and qualities of leadership are self evident.

Also included in the group are Manaia and Kani and Maria Te Wiata, grandchildren of the late Inia Te Wiata, the renowned New Zealand operatic bass. Inia himself was taught his carving by Wiremu Te Ranga Poutapu. When Inia Te Wiata died he left an unfinished carving in London, and at the request of his master carver this was brought back to New Zealand and completed by Inia's two sons, William and Inia junior.

All of the cultural group (including the carvers who completed it) will be seeing this famous carving for the first time, as it proudly stands in New Zealand House, London.



The Tour

The group will appear at Disneyland, Los Angeles on July 31st at 11 a.m. and give their first performance at the Fulcrum Centre at Slough in South London on August 4th. Between the 9th and 19th August they give three performances at the College of Education Theatre, Aberdeen, perform at the Adam Smith Centre in Kirkcaldy-Edzell and on the 13th August take part in the International Dance Gala at His Majesty's Theatre, Aberdeen. The Gala is repeated at the Leith Theatre, Edinburgh.

From the 21st-31st they are the guests of the Dartington Arts Society in South West England and a tour including Bristol, Cornwall, Plymouth, Barnstaple and Dartington Hall itself in Totnes.

Final details of the itinerary are still being worked out and the group will perform in Singapore on their return journey.

ACKNOWLEDGEMENTS

Culturally many people have worked to prepare this and other programmes for a variety of occasions. Every effort has been made to ensure authenticity in presentation and while most involved have already been mentioned the group would like to express its sincere thanks for the interest shown by the Maori Queen, Arikinui Te Atairangikaahu D.B.E., Revd Kingi Ihaka and the elders of Turangawaewae Marae.

Wardrobe. The theatrical description "wardrobe" barely describes the tremendous effort made by the people of Turangawaewae Marae, parents, teachers, students and friends of Ngaruawahia High School to complete the costumes for this performance. The piupius, headbands, bodices, tapekas and skirt patterns represent a blending of the school colours with traditional Maori designs. Each pattern represents aspects of Maori legend and traditions.

The Set posed major problems. Air travel size limitations meant that no container could exceed six feet by four feet by two feet. Based on an idea of the production director's, artists' drawings were done to scale by Treve Harvey, scale models were built and these were submitted to the scenic designer for comment and approval. From there, Rolls Industries Managing Director Athol Martin, and Design Engineer Mike Hennings, drew up plans making it possible for the set to be assembled in fifteen minutes and meeting the travelling conditions required. The carvings of course are done in the truly traditional style, but contemporary materials are used as a basis. Set construction is by Russell Braithwaite and Owen Harvey. Scenery painting is by Ian and Jean McCook. The stage crew is drawn from boys in the Maori Cultural Group while on tour.

The Founders Theatre. Manager Brian Earle and his staff are to be thanked for their help and particularly Ray Boyd for lighting direction and providing plots for overseas.

Sound Engineer Brian McElwain

House Management — We acknowledge the assistance of the Hamilton Operatic Society in providing staff.

House Manager — Carol Beale
Box Office — Maire Thompson
Doormen — Ben Wheatley
Miles Moodie
Usherettes —
Sandra Porteous
Val Easte
Jan Storey
Jeannie Hunter
Donna Dixon
Bev Rolfe
Jenny Soper
Anna Dinnison
Joanne Wheatley

NGARUAWAHUA HIGH STAGE CREW

Quentin West
Craig Mills
Steven Jolly
Murray Fox

NGARUAWAHIA HIGH PROGRAMME SELLERS

Zeta Waiwai
Jan Fairweather
Karen Hartstone
Joanne Loveridge
Betty-Marie Park
Diane Fairey
Fay Beckham
Ruth Murray



Thanks

Ngaruawahia High School, The Board of Governors, The Group Parents' Committee, the Planning Committee and the Touring Group itself would like to thank sincerely all those who have contributed financially to make this tour possible.

Donations have come from the North Cape to the Bluff, from schools and Maraes, from pre-schoolers to pensioners, from Australia, Hong Kong, U.S.A. and the United Kingdom, from companies big and small, and from individuals and collective sources too numerous to mention.

The International Festival of Youth Orchestras' Foundation and the Dartington Arts Society turned a dream into a possibility.

The support of thousands of New Zealanders means that we are well on the way to reaching our target of \$65,000. Fundraising is still continuing and donations may be sent to

Chairman of Fund Raising Committee,
Mr R. Pollock,
c/- P.O. Box 246,
Hamilton.

We are travelling

 ***AIR NEW ZEALAND***



If you wish to travel with us,
arrangements can be made with:

Alastair Calder,
Associated Travel Agents Ltd,
253 Victoria Street,
Hamilton.
Phone 81-119